

## **Firehall Arts Centre Technical Information**

**All details including inventory numbers are subject to revision and should be confirmed with the Technical Director of Firehall Arts Centre in advance of your production load in.**

### **Stage Layout:**

Firehall Theatre is an intimate black box studio with the stage at floor level and a single raked bank of seating for 136 (in Standard configuration) situated in a converted heritage building. Max seating 175. The control booth is located immediately behind the last row of seats in a sound isolated room with separate access which contains lighting, sound and stage management positions.

### **Stage Floor:**

Newly restored in July 2005. Floor is 'floating' - not nailed or otherwise attached to underlying slab. There is a vapour barrier, a foam layer, 2 layers of tongue and groove 5/8" plywood and a top layer of 1/4' masonite painted flat black. No nails, screws or tape allowed.

**Stage Dimensions:** please use floor / grid plan for more accurate dimensions.

Stage Depth: maximum 30' to traveler (dependant on seating layout/count).

Stage Width: maximum 50' at DS line.  
maximum 40' at US line.

Crossover: with the traveler and/or cyc in place a 3' deep crossover is available.

Grid Height: 14' 2" from stage deck. Asymmetric grid. No fly pipes

Ceiling Height: 15' 2" from stage deck.

Seating Rake: Floor row to 1<sup>st</sup> riser 8". Each subsequent rise is 16".

### **Drape:**

US Traveler: (2) 13' 4" H x 20' W black corduroy pieces on track US of LX 10 - pulley system is UL.

Legs: (8) 12' H x 7' W legs of matching black corduroy - on inverted "T" bars.

Cyc: (1) 12' 4" H x 32' W white cloth cyclorama, semi-permanently hung US of traveler.

Border: (1) 18" H x 32' W black Commando cloth attached to cyc

DS Traveler: (2) 13' 6" H x 25' W black Commando cloth pieces on track DS of LX 5 - pulley is SL.

### **Dressing Room:**

A single dressing room with washroom is accessible via the UL stage doorway. A shower is available off the upstairs washroom corridor. A second dressing room upstairs may also be available dependant on usage and your contract with the facility.

### **Load In:**

From Gore Ave. 3 sets of double doors within 10' lead straight onto the stage UR. Between outside set and 2<sup>nd</sup> set of doors there is a single 9" step down. Largest diagonal opening is 7' wide.

Or thru courtyard via concrete ramp to a set of double doors in the upstage wall. Largest diagonal is 8' wide, if cyc is in place this access is not available.

### **Parking:**

There is no parking available at the venue. All spaces are allocated to staff members only. Towing is in effect.

## Firehall Arts Centre Technical Information

### Lighting Inventory:

#### Control:

Lighting console: E.T.C. Insight 2 - memory board with manual channel / sub faders.  
108 control channels / 500 cues / 10 pages of 108 submasters / effects / softpatch / macros / etc.

Circuits: (96) 20 amp T.L.G. circuits distributed in groups of four throughout the grid.

Dimmers: (96) 2.4kW E.T.C. Sensor digital dimmers - dimmer per circuit.

#### Notes:

- 1) House lights are run through the lighting console and require 2 circuits / 2 dimmers / 1 control channel.
- 2) Firehall Theatre is a flexible facility and as such there is no standard house lighting plot.

#### Instruments:

(26) 500W Strand 2205 variable focus zooms - 25 degree to 50 degree. (7) gobo holders.

(36) 575W E.T.C. Source Four bodies.

Source Four lens barrels; (20) 50 degree. (18) 36 degree. (2) 26 degree. (2) 19 degree. (4) 70 degree.  
Accessories for Source Fours; (18) 'B' size gobo holders. (24) 'A' size gobo holders. (1) Iris.

(5) 750W Altman 6x9. (6) gobo holders.

(19) 500W Strand 3380 6" Fresnels.

(6) 500W Altman 6" Fresnels.

(8) 575W E.T.C. Parnels.

(14) 575W E.T.C. Pars

(16) 1000W Medium flood Par 64 (various manufacturers) some other bulbs may be available.

(28) Barndoors with no snoot. (3) Barndoors with 1" snoot. (8) Barndoors with 2" snoot.  
These fit all Fresnels, Parnels and E.T.C. Pars.

#### Booms / Floor plates:

(8) Boom plates with key clamp flanges and (8) 8' - 11' steel boom pipes.

(8) Plywood floor plates with bolts.

## Firehall Arts Centre Technical Information

### Sound Equipment Inventory:

#### Control:

- (1) Mackie CR1604 VLZ 16 channel mixing console.
- (1) QSC MX1000 stereo power amp.
- (2) Yamaha 1500 stereo power amp.
- (2) DOD stereo EQ units
- (1) Behringer Rev2496 V-Verb Pro
- (1) Tannoy active crossover

#### Audio Snake/Cable:

- (1) 100' 12 channel XLR sends with 4 returns runs from control booth to SR
- (6) 25' XLR microphone cables
- (6) 50' XLR microphone cables

Please note that if you require any adaptors or other cable that you should supply it.

#### Speakers:

- (2) JBL MR835 3-way cabinets (acting as Subwoofers in standard configuration)
- (2) Tannoy i12 2-way cabinets (hung on LX pipe 6 in standard configuration)
- (4) Generic brand stage monitors (not matching)

#### Playback:

- (2) Tascam CD 450 single CD player (with auto pause function).
- (1) Sony JE500 mini-disc player (with auto pause function).
- (1) Panasonic DDS27K DVD/CD player MP3 compatible (domestic model).

Digital Audio playback system running *Sound Cue System 9.5* available upon request  
(Requires trained programmer)

#### Microphones / DIs:

- (1) AKG SR40 Dual Wireless kit with lavalier & handheld microphones
- (1) Shure SM58 dynamic cardioid.
- (2) Shure PE86L dynamic cardioid.
- (2) Audio Technica AT935 / X - podium mics
- (3) Upright mic stands.
- (3) Boom mic stands.
- (2) DOD passive DI boxes.

Full microphone kit available upon request (extra rental fee may apply)

#### Music Stands:

- (5) Black 'Manhasset' stands with lights

#### Portable Sound System: (Available only upon advanced notice)

- (1) Behringer PMP1000 powered mixer
- (2) Toa 2-way speakers
- (2) Speaker stands
- (1) EV658L dynamic cardioid microphone

## **Firehall Arts Centre Technical Information**

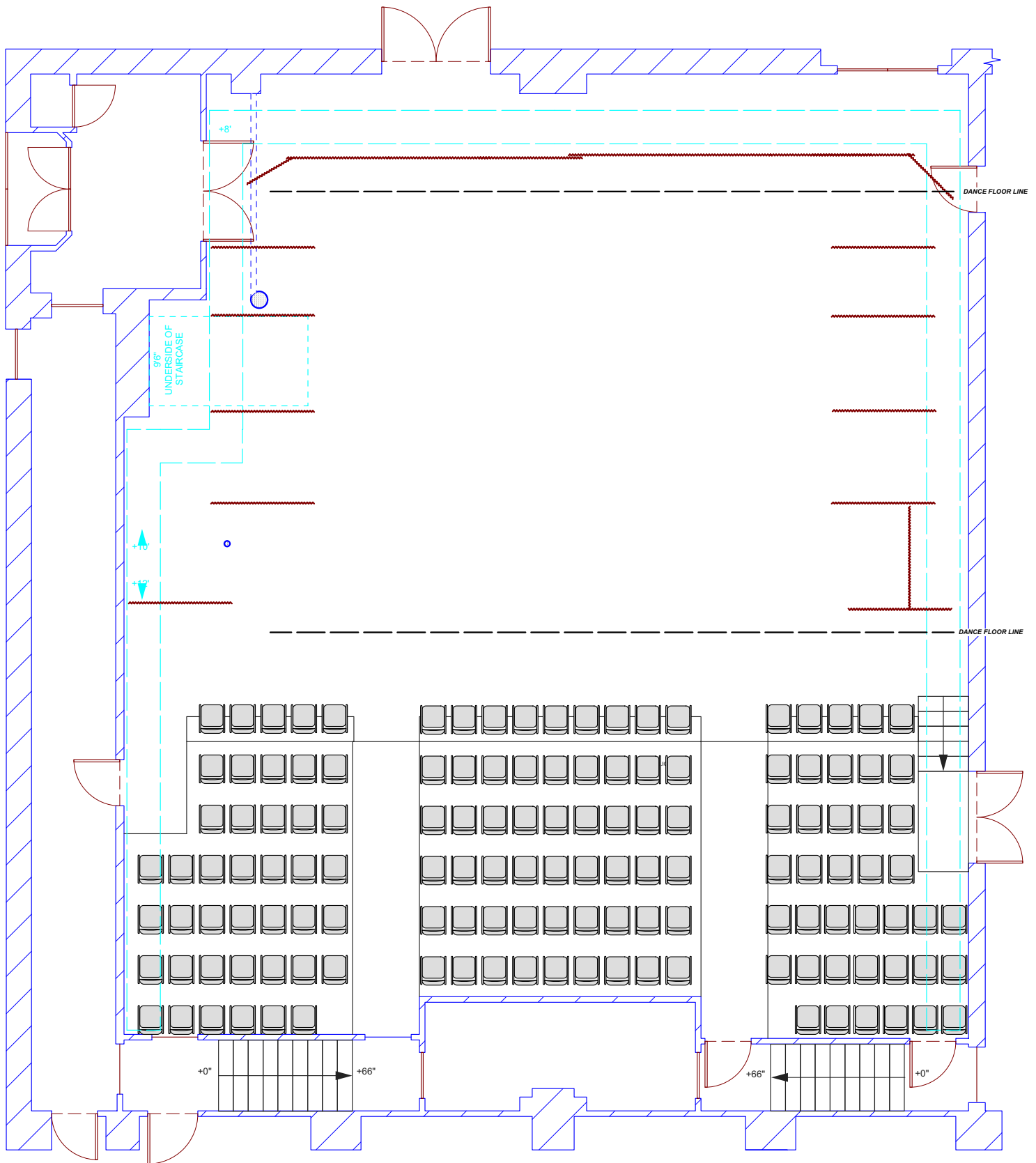
### **Communications:**

- (1) Clearcom 2 channel main station with headset.
- (4) Clearcom belt packs with headsets.
- (1) Clearcom remote station located in dressing room (incorporates program sound and paging).

### **Dance Floor:**

Black (non reversible) : (5) 5' 3" x 40' panels.

Black / White : (6) 5'3" x 40' panels N.B. this floor is new as of 2005 and will only be made available if there is no possibility of excessive wear due to set, foot wear or other production specific elements. FAC TD has sole discretion in this matter. Replacement value is \$4500.00.



**STANDARD LAYOUT**

**Firehall Arts Centre**

DESIGNER:

VER: 2

DRAWN BY: JEFF HARRISON

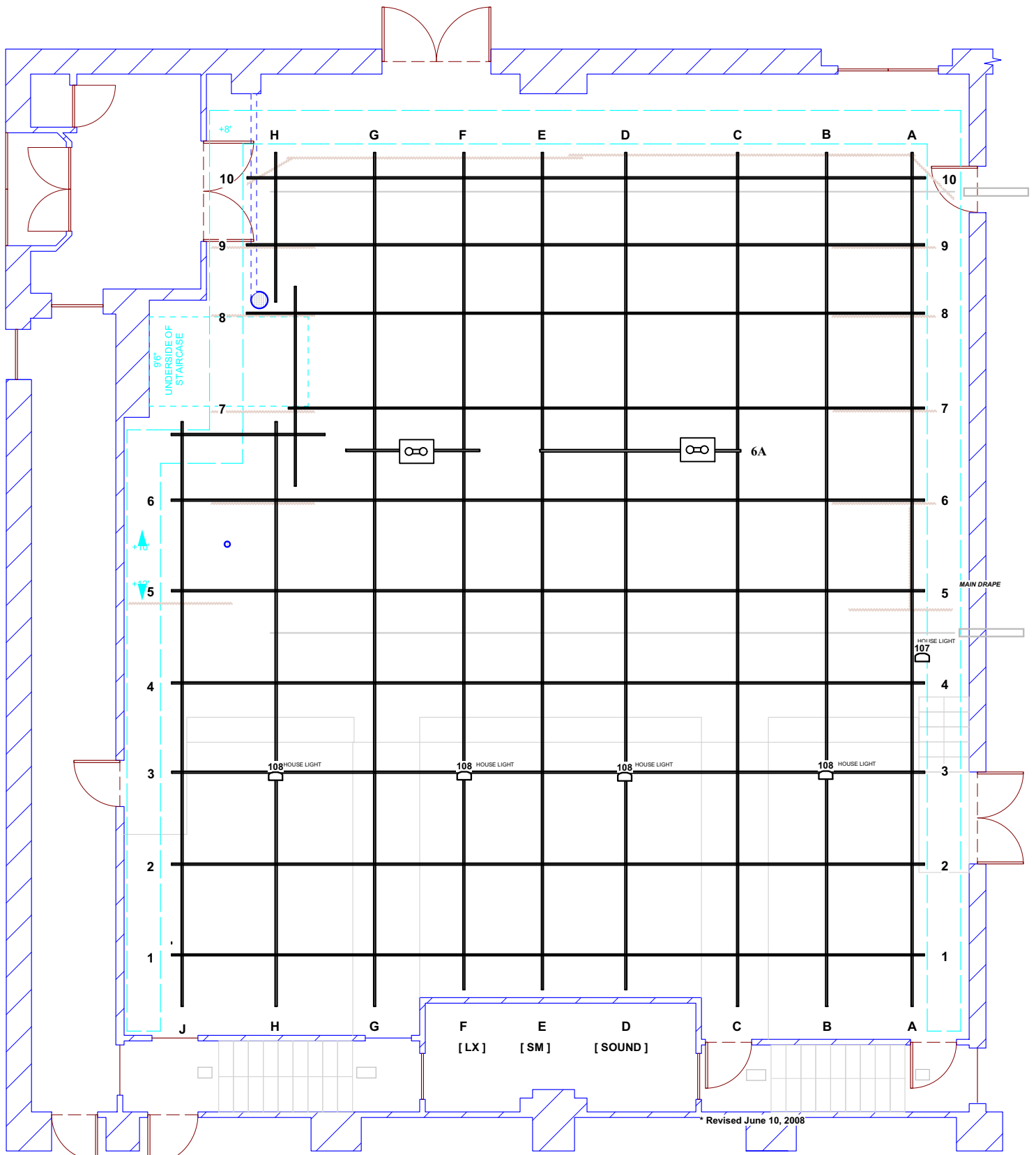
DATE: JUNE 22, 2005

DRW. #:

SCALE: 1/8" = 1'0"

Revised February 24th, 2009: CA

**1 of 1**



Revised June 10, 2008



# LIGHTING GRID

VER: 2 SCALE: 1/8" = 1'0"

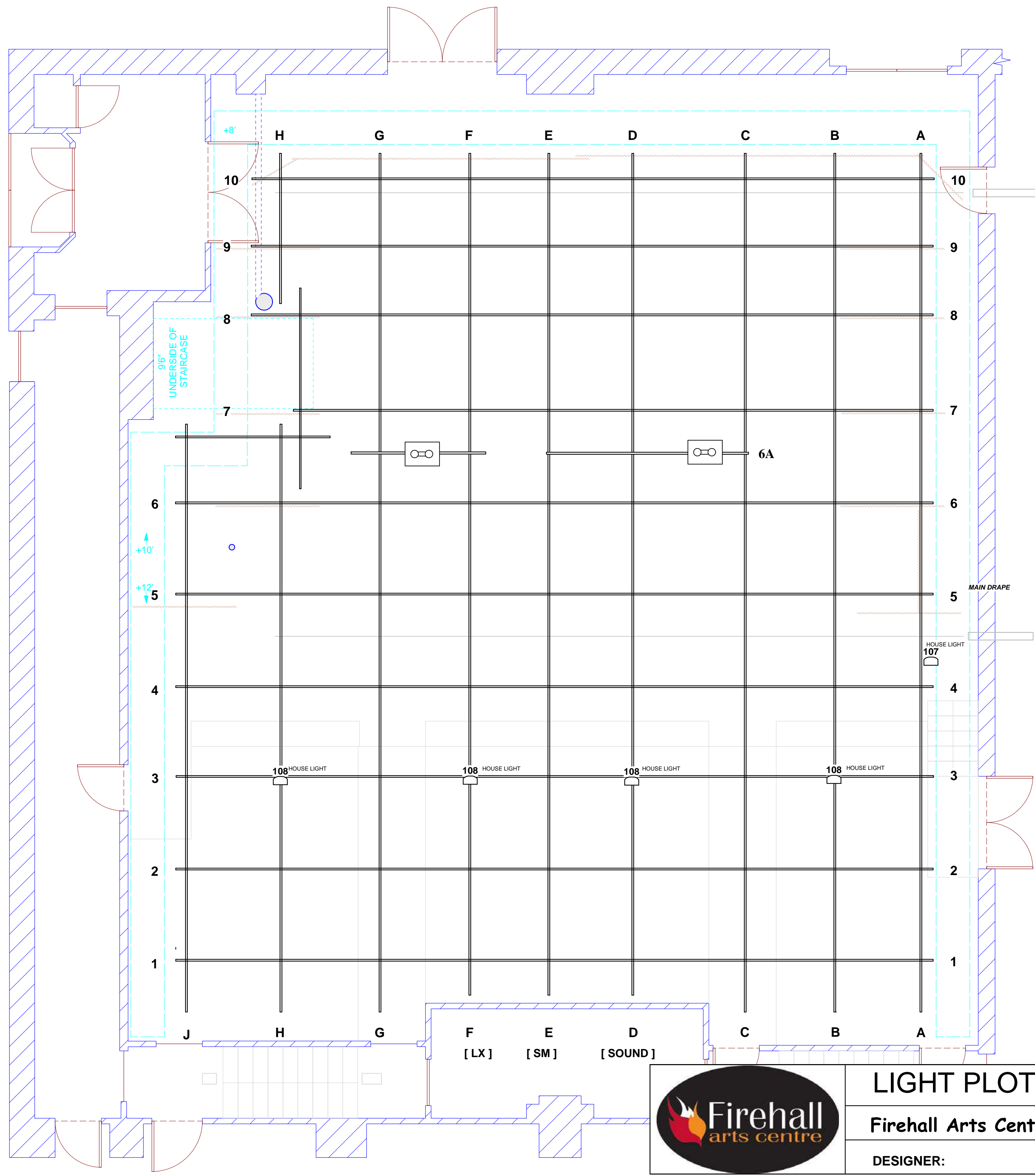
DRAWN BY: JEFF HARRISON

**Firehall Arts Centre**

DATE: JUNE 22, 2005 Revised February 24th, 2009: CA

DESIGNER:

DRW. #: **1 of 1**



### LEGEND

- STRAND 2205 ZOOM (500w)
  - 6X9 ALTMAN (750w)
  - 19° SOURCE 4 (575w)
  - 26° SOURCE 4 (575w)
  - 36° SOURCE 4 (575w)
  - 50° SOURCE 4 (575w)
  - 3380 6" FRESNEL (500w)
  - ALTMAN 6" FRESNEL (500w)
  - PAR 64 WFL (1000w)
  - PAR 64 MFL (1000w)
  - SOURCE 4 PAR WFL (575w)
  - SOURCE 4 PARNEL (575w)
  - CYC CELL (500w)
  - T-12 CABINET
- 
- I-CUE MIRROR
  - COLOR
  - GOBO
  - CHANNEL
  - SCROLLER #
  - SCROLLER
  - BOOM POSITION
  - FLOAT POSITION

What	Remain	Used	Inventory
HOUSE LIGHT	4	4	8
"2205"	26	0	26
"3380 Fresnel"	19	0	19
"Altman 3.5"	3	0	3
"Altman 6x9"	5	0	5
"Altman Fresnel"	6	0	6
"MR 16"	0	0	0
"PAR 64 MFL"	16	0	16
"PAR 64 NSP"	0	0	
"PAR 64 VNSP"	0	0	
"PAR 64 WFL"	0	0	
"SOURCE 4 36"	18	0	18
"SOURCE 4 50"	18	0	18
"SOURCE 4 PAR"	14	0	14
"SOURCE 4 PARNEL"	8	0	8
	137	4	141

NOTES:  
 \* Revision: Pipes remeasured & adjusted on drawing.  
 \*\* Added Inventory Count Worksheet  
 \*\*\* Cleaned Symbol Library



**LIGHT PLOT**  
**Firehall Arts Centre**  
 DESIGNER:

VER: 2  
 DRAWN BY: JEFF HARRISON  
 DATE: JUNE 22, 2005 Revised February 24th, 2009: CA  
 DRW. #: **1 of 1**

SCALE: 1/4" = 1'0"

---

---

## **Rules of Usage**

Rules apply to all members of company staff, from Artistic Director through administrative staff to production staff and crew.

Production schedules (including crew requirements) are to be submitted to, and approved by, FAC technical staff prior to arrival.

Lighting designs and set ground plans must be approved by FAC staff.

An FAC staff member must be present during any work in progress in the theatre.

There is no nailing, screwing, cutting, stapling, gaffer's taping, painting or otherwise affecting the stage deck, walls, drapes, etc. without the permission of FAC staff.

No on-site set building is allowed. Set fit-up only.

Removal of garbage generated during fit-up, run and strike is the responsibility of the user group. All props, set pieces, furniture, and costumes will be removed by the user group at the end of the strike. No storage is available.

No smoking, eating or drinking in the theatre.

No smoking , eating or drinking in the control booth.

Security is a shared responsibility: close doors behind you, and ensure they are locked where appropriate. Never leave any door open for any reason..there is NO EXCEPTION. User groups will be held liable for theft, or damage, to FAC equipment.

N.B. These rules are intended to ensure a safe and happy work environment for all. It is assumed that user group members will be made aware of them by the appropriate member of their company staff (e.g. stage manager) who will be responsible for enforcement. However, when necessary, FAC staff will enforce these rules.

---

## **FURTHER INFORMATION & RENTAL FEES**

A complete rental information package can be requested by calling 604-689-0691.

Due to the large volume of inquiries received, rental inquiries must be submitted in writing to [firehall@firehallartscentre.ca](mailto:firehall@firehallartscentre.ca)