

## **Firehall Arts Centre Technical Information**

**All details including inventory numbers are subject to revision and should be confirmed with the Technical Director of Firehall Arts Centre in advance of your production load in.**

### **Stage Layout:**

Firehall Theatre is an intimate black box studio with the stage at floor level and a single raked bank of seating for 136 (in Standard configuration) situated in a converted heritage building. The control booth is located behind the last row of seats in a sound isolated room with separate access which contains lighting, sound and stage management positions. Infra-red camera and monitor available.

### **Stage Floor:**

Restored in July 2005. Floor is 'floating' - not nailed or otherwise attached to underlying slab. There is a vapour barrier, a foam layer, 2 layers of tongue and groove 5/8" plywood and a top layer of 1/4' masonite painted flat black. **No nails, screws or tape allowed.** Floor is painted black by default. Painting or decorating the stage is possible but will incur a crew fee to restore to black.

**Stage Dimensions:** please use floor / grid plan for more accurate dimensions.

Stage Depth: maximum 30' to traveler (dependant on seating layout/count).

Stage Width: maximum 50' at DS line.  
maximum 40' at US line.

Crossover: with the traveler and/or cyc in place a 3' deep crossover is available.

Grid Height: 14' 2" from stage deck. Asymmetric grid. No fly pipes (pipe E is 2" lower)

Ceiling Height: 15' 2" from stage deck.

Seating Rake: Floor row to 1<sup>st</sup> riser 8". Each subsequent rise is 16".

### **Drape:**

US Traveler: (2) 13' 4" H x 20' W black corduroy pieces on track US of LX 10 - pulley system is UL.

Legs: (8) 12' H x 7' W legs of matching black corduroy - on inverted "T" bars.

Cyc: (1) 12' 4" H x 32' W white cloth cyclorama, semi-permanently hung US of traveler.

Border: (1) 18" H x 32' W black Commando cloth attached to cyc

DS Traveler: (2) 13' 6" H x 25' W black Commando cloth pieces on track DS of LX 5 - pulley is SL.

Please Note: US/DS Traveler curtains cannot be removed or relocated.

### **Dressing Room:**

A single dressing room with washroom is accessible via the UL stage doorway. A second dressing room upstairs may also be available dependant on usage and your contract with the facility.

### **Load In:**

From Gore Ave. 3 sets of double doors within 10' lead straight onto the stage UR. Between outside set and 2<sup>nd</sup> set of doors there is a single 9" step down. Largest diagonal opening is 7' wide.

Or thru courtyard via concrete ramp to a set of double doors in the upstage wall. Largest diagonal is 8' wide, if cyc is in place this access is not available.

### **Parking:**

There is no parking available at the venue. All spaces are allocated to staff members only. Towing is in effect.

## Firehall Arts Centre Technical Information

### Lighting Inventory:

#### Control:

Lighting console: E.T.C. Ion- memory board with 20 manual channel / sub faders.  
Circuits: (96) 20 amp T.L.G. circuits distributed in groups of four throughout the grid.  
Dimmers: (96) 2.4kW E.T.C. Sensor digital dimmers - dimmer per circuit.

### LX Notes:

1) House lights are run through the lighting console and require 2 circuits / 2 dimmers / 1 control channel.  
2) The Firehall gel inventory is limited but available for use. Please contact FAC TD for specifics.  
3) The Firehall's 'house hang' includes several LED fixtures. These lights can be refocused but not rehung. See below for specs and configuration.

#### Instruments:

(10) ColorSource Spot Jnr LED fixtures 25-50°. (10) gobo holders [**permanently hung**]  
  
(10) Color Source Spot Jnr Deep Blue LED fixtures 25-50°. (10) gobo holders [**permanently hung**]  
  
(20) 500W Strand 2205 variable focus zooms – 25-50°. (7) gobo holders.  
  
(6) SixPar 200 RGBAW+UV LED par fixtures  
  
(36) 575W E.T.C. Source Four bodies  
Barrels that can be swapped in:  
(4) 70 degree (19) 50 degree (22) 36 degree (3) 26 degree (2) 19 degree  
Accessories for Source Fours:  
(12) 'B' size gobo holders (24) 'A' size gobo holders (1) Iris.  
  
(5) 750W Altman 6x9 (6) gobo holders.  
  
(20) 500W Strand 3380 6" Fresnels.  
  
(6) 500W Altman 6" Fresnels.  
  
(8) 575W E.T.C. Parnels.  
  
(14) 575W E.T.C. Pars  
Lenses of varying flood width available:  
(14) VN5P (14) NSP (14) MFL (14) WFL (4) XWFL  
  
(8) 1000W Medium flood Par 64 (various manufacturers) some other bulbs may be available.  
  
(28) Barndoors with no snoot (3) Barndoors with 1" snoot (8) Barndoors with 2" snoot  
These fit all Fresnels, Parnels and E.T.C. Pars.  
  
(1) Rosco I-cue

## Firehall Arts Centre Technical Information

### Booms / Floor plates:

- (8) Boom plates with key clamp flanges and (8) 8' - 11' steel boom pipes.
- (8) Plywood floor plates with bolts.

### Dance Floor:

Black (non reversible): (5) 5' 3" x 40' panels.

Black / White: (6) 5'3" x 40' panels (this floor will only be made available under certain circumstances)

Please contact FAC TD for availability

### Projection Inventory :

**Projectors subject to availability. Additional rental fee may be required**

Fastfold Rear Projection Screen 9' x 12'

(2) Benq MW853 Ultra short throw projector (3200 lumens)

Infocus 42+ projector (4000 lumens)

Benq 622 projector (2200 lumens)

Nec NP-M300WS Short throw projector (3000 lumens)

### Sound Equipment Inventory:

#### Control:

- (1) Allen & Heath Qu-16 Digital Mixing Desk
- (1) QSC MX1000 stereo power amp.
- (1) Yamaha 1500 stereo power amp.
- (2) DOD stereo EQ units

#### Audio Snake/Cable:

- (1) 100' 12 channel XLR sends with 4 returns runs from control booth to centre-stage right
- (1) 12 channel XLR Snake permanently run to the USL wall
- (6) 25' XLR microphone cables
- (6) 50' XLR microphone cables

#### Speakers:

Main : (2) Tannoy i12 2-way cabinets, deadhung between LX 6 and LX 7 at LX D and LX F.  
Spare: (2) JBL MR835 3-way cabinets, floor mount only (available upon request)

#### Playback:

- (1) Mac Mini with Qlab 4 (pro licence included)
- Additional playback systems available upon request.

#### Microphones / DIs:

- (1) Shure SM32
- (2) Shure PE86L dynamic cardioid.
- (3) Shure SM 58
- (3) Upright mic stands.
- (3) Boom mic stands.
- (3) DOD passive DI boxes.

(2) SKM 500 G4 Wireless microphones (with MMD-835-1 Cardioid Capsules)

**Wireless Microphones subject to availability. Additional rental fee may be required.**

Revised April 19, 2021

## **Firehall Arts Centre Technical Information**

### **Music Stands:**

(6) Black 'Manhasset' stands with lights

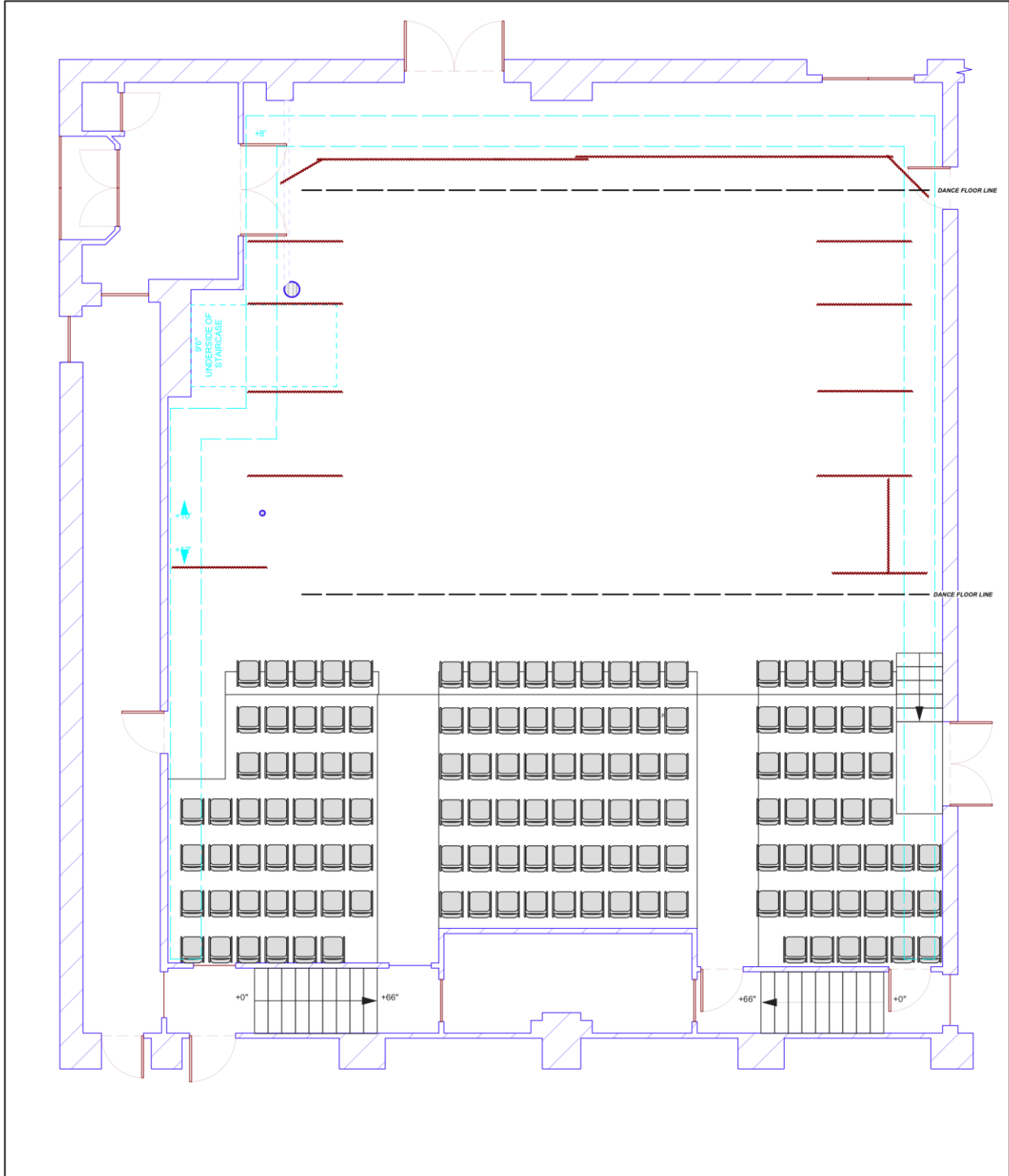
### **Communications:**


(1) Clearcom 2 channel main station with headset.

(4) Clearcom belt packs with headsets.

(1) Clearcom remote station located in dressing room (incorporates program sound and paging).

# Firehall Arts Centre Technical Information

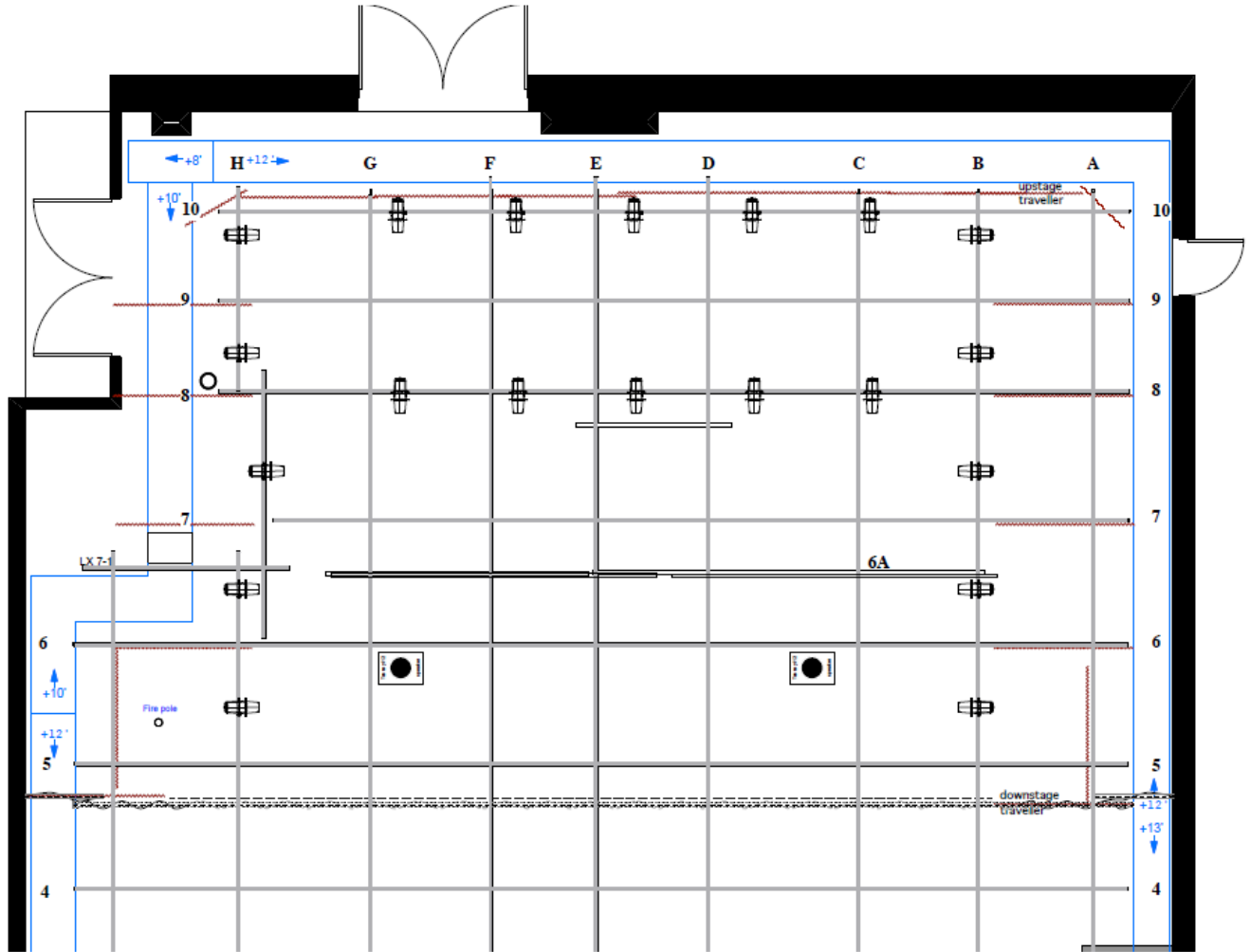


	<b>STANDARD LAYOUT</b>	VER: 2	SCALE: 1/8" = 1'0"
	Firehall Arts Centre	DRAWN BY: JEFF HARRISON	
	DESIGNER:	DATE: JUNE 22, 2005	Revised February 24th, 2009: CA
		DRW. #:	<b>1 of 1</b>

Revised April 19, 2021

Firehall Arts Centre Technical Information

**Firehall House Hang**



Revised April 19, 2021